

FASTTRACK SHARPENER REF. FTS/KIT

Thank you for purchasing this Trend product which should give lasting performance if used in accordance with these instructions.

The following symbols are used throughout these instructions:

Denotes risk of personal injury, loss of life or damage to the tool in case of non-observance of the instructions.

INTENDED USE

This accessory is intended to raise and maintain the cutting edge for TC, Tool Steel and HSS tools. It can be used with hand chisels and plane irons to sharpen the cutting edge.

SAFETY

PLEASE KEEP THESE INSTRUCTIONS IN A SAFE PLACE.

Please read and understand these instructions.

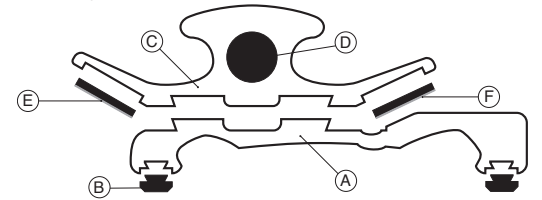
Users must be competent in using woodworking equipment before using our products. Please wear gloves, safety glasses and dust mask. Consider working environment before using tools. Ensure working position is comfortable and component is clamped securely. Please keep children and visitors away from tools and work area. All tools have a residual risk, so must therefore be handled with caution. All cutting edges are very sharp and care must be taken to prevent injury. Never sharpen blades towards the hand or body. Always work in a clear uncluttered area.

ITEMS REQUIRED

- Light lubricant oil.
- Cleaning block.
- Pozzi® No.2 screwdriver.
- Gloves, safety glasses and dust mask.

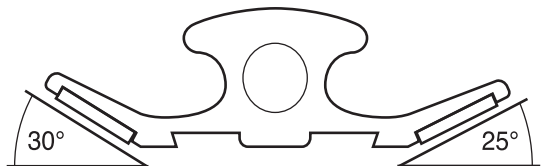
ITEMS ENCLOSED & DESCRIPTION OF PARTS

- A. Base **x1**
- B. Rubber feet **x4**
- C. Carriage **x1**
- D. Carriage poppers **x2**
- E. Diamond preparation stone 220 grit (black) **x1**
- F. Diamond finishing stone 450 grit (white) **x1**
- G. Cleaning block **x1**
- H. Mounting screw No.8 x 1-1 / 4" **x1**



OPERATION

Before every use ensure both the base and carriage are clean and lubricated before use, paying particular attention to the outer dovetail guides (sections). This process will ensure a smooth gliding action.

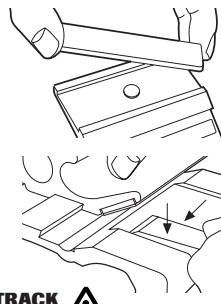


SET-UP

The back of the tool (the un-bevelled side) must be ground absolutely flat before sharpening. This process is imperative if a razor sharp finish is to be achieved.

- Choose the 25° sharpening angle indicated by top sticker.
- Choose the preparation diamond stone, indicated by the coloured backing plate:
Black = 220 grit (Preparation).
White = 450 grit (Fine).

- Fit the diamond stone into the recess in the carriage then slide the carriage onto the base accordingly.

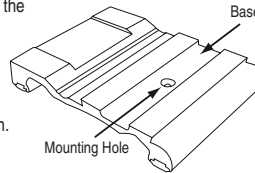


- Place tool to be sharpened flat side down on the base unit and push it forward until it makes contact with the diamond stone.

Mounting Instructions

To Permanently Mount the FASTTRACK onto a Bench or Work Surface.

- Slide the FASTTRACK carriage top off the base.
- Place the base in a suitable position on your work surface.
- Using a No.2 Pozzi® screwdriver, screw the No.8 countersink screw through the base mounting hole in to the bench.
- Check the head of the screw sits flush in the base.
- Slide the carriage top back into position.
- Your FASTTRACK is now ready to use.



Ensure working height and position are comfortable.

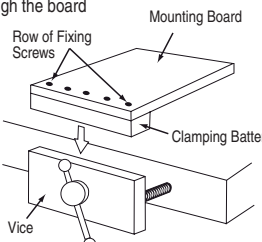
Making a Mounting Board - Semi Permanent Jig for Holding the FASTTRACK in a Vice.

Materials required to make a mounting board are as follows:

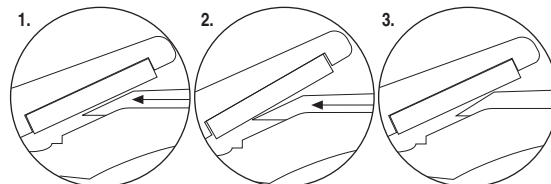
- Ply or MDF 240mm x 220mm x 18mm **x1**
- Wood Batten 220mm x 50mm x 50mm **x1**
- No.8 Countersunk screws **x5**

The board can be any reasonable size providing the 4 x rubber feet of the base sit comfortably on it.

- Position the batten along the front of the vice facing edge.
- Mark and drill a line of pilot holes through the board approximately 25mm in from the edge.
- Screw and glue (if necessary) the batten tight up against the board - wipe away the excess glue.
- When the glue is dried follow the above instructions for fitting the FASTTRACK to the board.



Cutting Edge Contact



1. Shows full contact between the diamond stone and tool bevel.
2. Shows contact between the diamond stone and tool cutting edge (tip), if your tool looks like either of the above you are ready to sharpen. Proceed to sharpening.
3. Should your blade make contact at the top or middle of the bevel or be very badly damaged, a large amount of material will have to be ground away before the edge can be worked on. This can be done with the coarsest diamond stone but will take considerable time.

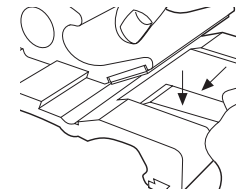
The larger the blade and the more material needing to be removed the longer the process will take. Where large amounts of material need to be removed we recommend the use of a powered grinding wheel. You should grind your tool edge to the desired angle or slightly less. e.g 24° for a 25° finish.

Sharpening

- At this point you should already have the FASTTRACK set up with the preparation diamond stone. This is the coarsest stone supplied and will remove the most material in the quickest time.

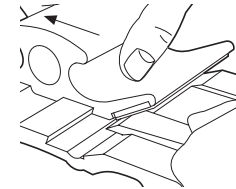
You may wish to skip to the finishing diamond stone, depending on the amount of material you wish to remove.

- Ensure FASTTRACK is on a stable flat surface and that working position is comfortable.

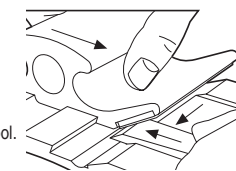


- Place the tool to be sharpened flat side down on the tool recess against either of the shoulders. Hold tool firmly and securely when sharpening.

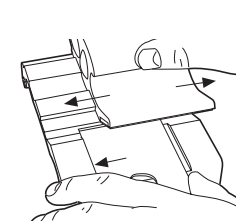
- There is a small amount of float between the carriage and base. Take up this float by moving the carriage away from the tool.



- Move the tool forward until it makes contact with the diamond stone then hold it firmly in position against the shoulder.



- Slide the carriage back towards the tool. Note the carriage rises slightly.



- Applying gentle pressure against the tool, slide the carriage backwards and forwards whilst keeping the side of the tool firmly in position.

When sharpening ensure the carriage movement doesn't extend past the edge of the base.

- Regularly check the cutting edge of the tool. When a burr or wire forms across the entire width of the back/underside of the tool it indicates that you are ready to move on to a finer stone.

Removing Burr

- Remove the burr/wire that may form on the back of the tool cutting edge by gently working one of the spare diamond stones flat on the back of the tool.



Some burrs/wires may require stropping.

- Now select the finishing diamond stone at the 30° angle and repeat sharpening procedure.

Micro Secondary Bevel

Adding a micro secondary angle to your tool will provide a sharper edge. It also reduces the amount of material needed to be removed when re-sharpening the blade.

Keeping the sharpening angle and finishing stone as they were, repeat sharpening steps but only perform 5 strokes.

If a wire has formed it will need to be removed. For the ultimate sharp edge, remove and finish the tool on a strop or similar.

Hints & Tips

It is not necessary to use excessive pressure in any direction when using the FASTTRACK. The diamond cutting action feels 'soft' but can remove metal rapidly, especially when the coarser stone is used.

If you find difficulty in seeing the progress of the grinding action, try marking the cutting edge of the tool to be sharpened with a dark-colour spirit/marker pen. This will clearly show where material is being removed.

Once a tool has been properly sharpened, it should not be necessary to remove much more metal to retain a good edge. 'Little and often' is preferable to major re-sharpening activity.

It will be almost impossible to achieve a true edge if the back of the tool is pitted or warped. Time spent properly 'flattening' the tool will ensure a good result. After use, store product carefully.

ACCESSORIES

Please use only Trend original accessories.

- Product Ref. FTS/S/R** Roughing stone 100 grit (silver)
- Product Ref. FTS/S/FF** Fine finishing stone 600 grit (red)
- Product Ref. FTS/S/SFF** Super fine finish stone 1000 grit (green)
- Product Ref. FTS/DP/SFF** Deburr plate super fine finish 1000 grit
- Product Ref. DWS/LF/100** Lapping fluid 100ml
- Product Ref. FTS/CEG** Chisel edge guards 12 pack

SPARE PARTS

Please use only Trend original spare parts.

Item	Qty.	Desc.	Ref. (1 off)
E	1	Preparation Stone 220 Grit (Black)	FTS/S/P
F	1	Finishing Stone 450 Grit (White)	FTS/S/F
G	1	Cleaning Block	DWS/CB/A

MAINTENANCE

Please use only Trend original spare parts and accessories. The accessory has been designed to operate over a long period of time with minimum of maintenance. Continual satisfactory operation depends upon proper tool care and regular cleaning.

Cleaning

- Regularly clean with a soft cloth.

Lubrication

- Your accessory requires lubrication of the base and carriage. Pay particular attention to the outer dovetail section.

Storage

- After use, store the product in its packaging, or if fitted to a mounting board, in a cupboard.
- If mounted permanently to a bench it should be covered with a dust cover.

Care of Diamond Stones

- The diamond stones supplied with your FASTTRACK are of the best quality available. While essentially 'maintenance-free' the following tips will ensure the longest life and best sharpening performance possible:

- Use stones dry or with lapping fluid.
- Clean the diamond stone surface during and after use with the cleaning block. The diamond is embedded into a deep Nickel-plated substrate, so they may be washed in slightly soapy warm (not hot) water and then dried thoroughly before storage.
- Store diamond stones in a clean, dry environment.

ENVIRONMENTAL PROTECTION

Recycle raw materials instead of disposing as waste.

Packaging should be sorted for environmental-friendly recycling. The product and its accessories at the end of its life should be sorted for environmentally friendly recycling.

GUARANTEE

All Trend products guaranteed against any defects in either workmanship or material, except products that have been damaged due to improper user or maintenance.

Our policy of continuous improvements mean that specifications may change without notice. Trend Machinery & Cutting Tools cannot be liable for any material rendered unusable or for any form of consequential loss.

© Trend Machinery & Cutting Tools Ltd 2013, 2015. E&OE.

© All trademarks acknowledged.

